



Otterpool Park

Learning Programme 2024

A guide to educational events
and activities for students from
Key Stage 1 to Key Stage 5



OTTERPOOL PARK
COUNTRYSIDE • CONNECTED • CREATIVE

www.otterpoolpark.org

Welcome

Welcome to Otterpool Park's Learning Programme, which brings together our full range of events and activities for schools and education providers.

We are committed to working with the community to deliver an engaging, rewarding and enjoyable experience of Otterpool Park, before even the first tree is planted or brick laid at the new garden town.

Otterpool Park will be home eventually to up to eight primary schools and two secondary schools and our 2024 learning programme runs alongside an ambitious education project to develop the first school, providing school places in the early phases of the development.

We have strong vision around Otterpool Park being a distinctive place where health and wellbeing, the environment, culture and creativity are valued, and these themes run through our learning programme.

From heritage and sustainability to cutting edge technology, our events and activities are suitable for primary and secondary schools and will be delivered by specialist practitioners.

These high-quality enrichment activities support the curriculum and the Gatsby benchmarks for careers education and provide opportunities for students to have space and time outside of the classroom to discover, experiment, learn, play, interact, inquire and develop their confidence.



About Otterpool Park

We are creating a new garden town in Kent, a place where people can lead a healthy, active and sustainable lifestyle in a creative, inclusive and vibrant community.

Otterpool Park is set in the countryside around the beautiful and historic Westenhanger Castle and our plans have been designed with a landscape-led

approach, sensitive to local context and appropriate to local character with the local landscape.

Otterpool Park has an excellent location; it is close to the Kent coast and towns of Folkestone and Hythe, and London is in easy reach from nearby Westenhanger station that will serve Otterpool Park.

How to access our Learning Programme

To help you choose which activities are most suitable for your school, we have clearly identified sessions by subject area, age and date in this guide.

All the workshops and activities in this programme are **fully funded** but are subject to availability, please express your interest to our team as soon as possible to avoid disappointment.

We are aware that barriers such as travel and cover costs can sometimes make it hard to access external activities, so please contact us to discuss how we might be able to support you. Sessions may be able to be adapted and we may be able to assist with transport or connect you to partner organisations that could help.

We are also always keen to listen to ideas and grateful for your feedback on ways we can support you in your work to deliver the curriculum as we develop our Learning Programme for the 2024/2025 academic year.

Contact the team:
community@otterpoolpark.org

Learning Programme Key	
Subject	Venue
Age	Number of Students
Date	Gatsby Benchmarks
Duration	

Spaceship Earth

Don't miss out - book your school's place now!

SPACEFUND

This interactive, educational, online show catapults primary school children into a space-themed STEM adventure, blending the thrill of space exploration with the crucial role the UK Space Industry is playing in combating the climate crisis.

Playing the role of aspiring space engineers and scientists, the pupils decide the path of an Earth observation mission, navigating orbiting satellites and discovering a few surprises on the way!

'Spaceship Earth' is not merely a show; it's a gateway to inspire a new generation of space and climate enthusiasts, showcasing the intersection of science, technology, and climate action.

Secure your virtual seat now and let this space adventure propel young minds to reach for the stars while saving our precious planet.



STEM
KS1 & 2
18TH JANUARY
1 HOUR (1.30 - 2.30PM)
UNLIMITED
ONLINE IN YOUR SCHOOL
GATSBY 1,2,4



Sensat Drone School

Construction Mapping

sensat

This amazing opportunity is delivered in two sessions:

Session 1: Exploring Construction Mapping

Students will be introduced to the world of construction surveying using innovative techniques such as UAVs (drones). They will learn about surveying methods, data collection and will have the chance to plan their own drone flight. This is an interactive session with employees from the built environment and technological sectors. Students will have a chance then to enter the Sensat Surveying Competition for a chance to earn a spot on the Westenhangar Drone Experience Day.



GEOGRAPHY, SCIENCE, DT, COMPUTING, MATHS

YEAR 9

SESSION 1: SPRING TERM, JAN - MARCH

SESSION 1: 1 HOUR

SESSION 1: WHOLE CLASS IN 5 SCHOOLS

SESSION 1: DELIVERED IN YOUR SCHOOL

GATSBY 4,5



Session 2: Westenhangar Drone Experience Day

The winners of the Sensat Surveying Competition will enjoy a practical day out with our drone team at Westenhangar Castle. Here, students will be able to apply their newly-gained knowledge of construction surveying and data capture. The Sensat team will guide students through the hands-on activities such as measuring survey points, planning flight routes, safety briefings, pre-flight checks and basic pilot lessons to earn their Sensat Drone Pilots Licence by the end of the day. The students will be capturing their own data for Otterpool Park which will then be visualised on Sensat's 'digital twin' software.



GEOGRAPHY, SCIENCE, DT, COMPUTING, MATHS

YEAR 9

SESSION 2: MAY

SESSION 2: 1 DAY

SESSION 2: 20 STUDENTS (4 FROM EACH SCHOOL)

SESSION 2: WESTENHANGER

GATSBY 4,5



Apprenticeships and the Built Environment



Do your students have all the facts to decide on their transition pathways? This session, which takes place during National Apprenticeship Week, is designed to outline the options available: University, College, and Apprenticeships all through the lens of the Built Environment sector.

We will provide an interactive and informative session explaining the development of standard apprenticeships, what they are and how to access them highlighting traditional and non-traditional opportunities. Students will also get the chance to ask questions of current or former apprentices to gain a valuable insight into real world experiences. We aim for this session to give students an overview of the pathways available and an in-depth understanding of apprenticeships.

- STEM, CAREERS
- KS4 & KS5
- 5TH - 11TH FEBRUARY
- 1.5 HOURS
- 30 STUDENTS
- DELIVERED IN YOUR SCHOOL
- GATSBY 2,3,5

Supported by



Renewable Energy Workshops



Supported by



We hear about solar and wind power as sources of renewable energy, but how can we capture and then store the energy these sources produce?

In this hands-on workshop, which takes place during British Science Week, students will be introduced to the physics of photovoltaic cells, generators, capacitors and batteries.

- SCIENCE (PHYSICS), CAREERS
- KS3
- 8TH - 17TH MARCH
- 1.5 HOURS
- 30 STUDENTS
- DELIVERED IN YOUR SCHOOL
- GATSBY 4



AI Adventures: Journeys into a Creative World

Supported by



In this interactive and fun-filled session, students will step into an imaginative world of endless possibilities, embarking on an exciting journey of creative exploration.

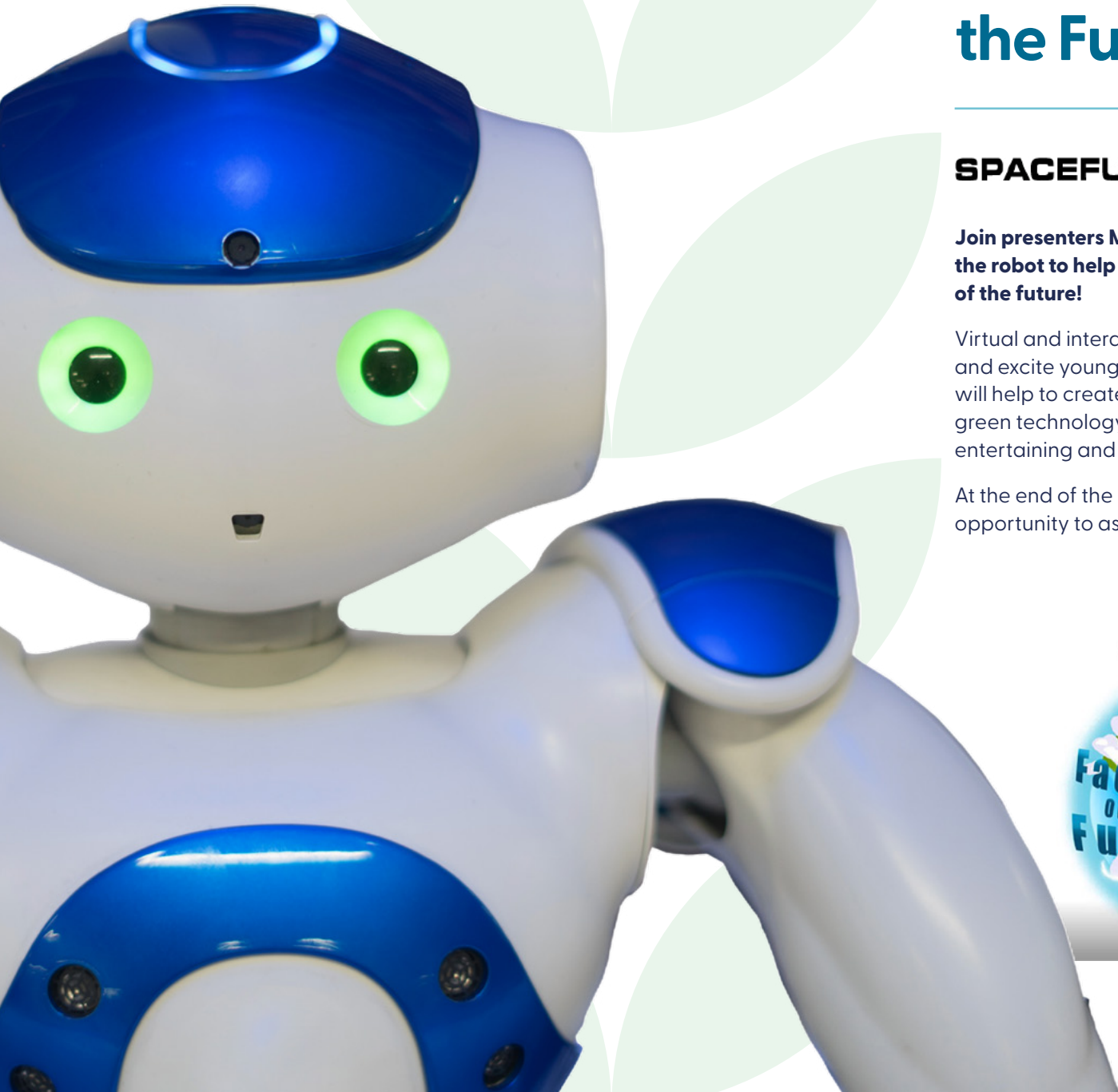
Working closely with the Holiday Extras' team of brand experts, including designers and copywriters, the students will dive deep into the world of cutting-edge AI technology to help unleash their creative potential.

The students will work in small groups with our creative marketing team to create an AI-assisted brochure for visitors to Otterpool Park, with its castle, lake and parkland. With hands-on access to the latest tech, they'll bring their imagination to life, crafting stunning visuals and captivating stories. Hosted at HX's modern Newingreen Campus, a hub of innovation, the students will also witness a future-focused workplace in action.

Students will leave with newfound knowledge, sparks inspiration and a treasure trove of dazzling AI creations!

	COMPUTING, ENGLISH, ART AND DESIGN
	KS3
	ON DEMAND
	2 HOURS
	10 - 15 STUDENTS
	THE WAVE / REEF CAMPUS, NEWINGREEN
	GATSBY 2,5,6





Factory of the Future

Don't miss out - book your school's place now!

SPACEFUND

Join presenters **Matt the engineer** and **Nao the robot** to help build an amazing factory of the future!

Virtual and interactive science show to inspire and excite young audiences. The children will help to create a net zero factory using green technology, learning about STEM in an entertaining and age-appropriate way.

At the end of the live show there will be an opportunity to ask Matt and Nao questions.

STEM
KS1 & KS2
7TH MARCH 2024
1 HOUR (1.30 - 2.30PM)
UNLIMITED
ONLINE IN YOUR SCHOOL
GATSBY 2,4



Nourished for Life Workshop

(and optional assembly)

Supported by

Dr Legumes

This is an interactive and immersive workshop on plant-based nutrition, delivered in your school hall, designed to inspire and encourage young people.

Delivered through a mix of:

- interactive games
- facts and figures, Q&A and instruction
- actual food preparation including learning safe techniques
- sensory experiences, colourful foods and taste tests

The pupils will learn about vitamins and minerals and their importance in healthy eating, and where we find nutrients in the food we eat.

- FOOD TECHNOLOGY, PSHE, SCIENCE
- UPPER KS2
- ON DEMAND (TUESDAYS AND WEDNESDAYS)
- 1 HOUR
- 30 STUDENTS (ASSEMBLY 30+)
- IN YOUR SCHOOL
- GATSBY 4,5

The pupils will share some plant-based chocolate brownies (nut and gluten free)



Optional assembly (30 mins):

Dr. Legumes can offer an assembly alongside their workshop. This provides your students with a well-rounded introduction to plant-based nutrition: what nutrients are and where we get them from sustainably. The assembly is ideal for KS2 pupils and encourages them to build an understanding themselves so they can make calculated & informed decisions about the food they eat.



Otterpool Park Workshop

The project at Otterpool Park to develop a new garden town has many facets. It is responding to the need for more homes as the population grows but needs to be created sympathetically to the environment in which it is proposed. Placemaking is the process of creating quality places that people want to live, work, play and learn in.

Heritage, sustainability, education, employment, health & wellbeing and creativity are all elements that are woven into creating a new place in order to make it a town that will provide for its new residents and neighbours, while being mindful to reduce the impact on the surrounding area.

This workshop will encourage students to understand the impact of population growth, look at other examples of garden towns across the country and consider how they might approach placemaking in the modern world. The students will also learn about the many different professions that are involved in a project of this scale.



OTTERPOOL PARK
COUNTRYSIDE • CONNECTED • CREATIVE

- CITIZENSHIP, PSHE, CAREERS, DESIGN TECHNOLOGY
- KS1 - KS5
- DATE AS REQUESTED
- 1 HOUR
- 40 STUDENTS
- DELIVERED IN YOUR SCHOOL
- GATSBY 4,5,6



Habitats in the Landscape

Learn about the work of an ecologist in the context of Otterpool Park and be taken on a led walk to identify habitats in the landscape.

Exploring the hedgerows, wet areas, trees and meadows the children will learn about the types of environments you can expect to find different species of bugs, birds and mammals. The children will learn how to conserve existing features, connect various wildlife areas and look at what new features can be created to attract more creatures.

They will then work together to make a large bug hotel for Otterpool Park that will be left on site to attract the mini beasts.

- SCIENCE (BIOLOGY) CITIZENSHIP, CAREERS
- KS2
- JUNE - JULY
- 3 HOURS
- 30 STUDENTS
- OTTERPOOL PARK
- GATSBY 5

Supported by



Westenhanger Train Station

Urban Intervention Scheme

Over the coming years, working with young people, local artists, and community groups and the local White Cliffs Community Rail Partnership, we intend to carry out a number of creative interventions at Westenhanger Station. These will be playful and experimental additions to the station environment, in celebration of its future as the gateway to Otterpool Park.

If you are a teacher, member of a local community group, or a local artist and are interested in joining in, please contact us. We will identify two small scale projects per year to explore and deliver together.

Contact the team:
community@otterpoolpark.org



Information

Health & Safety and Safeguarding

While school trips provide a wonderful and memorable learning experience for children to discover new sights and sounds in an unfamiliar environment, we recognise that where there is fun and adventure, there are sometimes risks that accompany it.

We will provide risk assessments for all activities and brief students at the beginning of each session, giving clear instructions for the activities they will undertake.

Schools are requested to provide information regarding any special needs or medical requirements of the students ahead of the visit.

A first aid box and qualified first aider will be available for all sessions provided.

We will identify to you which of our staff and facilitators have a DBS check in place and will ensure where possible, that they have completed the Safeguarding Level 1 through the Kent Safeguarding Children Multi-Agency Partnership to ensure that they are aware of, and able to carry out their safeguarding responsibilities effectively.

All staff and facilitators will be aware that working alone with children is not standard practice in any line of work and to be aware of the requirement to have at least two adults in the workspace at any one time.

How to Book

Some of these workshops are offered within a certain period to allow schools to select a suitable date. There is a limited availability of sessions available so please book early to avoid disappointment.

Book your school workshop by contacting:
community@otterpoolpark.org

Introducing Our Team

We are working with a wide range of consultants, professionals and partner organisations to plan and deliver Otterpool Park. Helping the community to access this specialist knowledge and activity is part of our part of our Otterpool Park in the Community outreach activity.

The following specialists are delivering our Learning Programme:



Gallagher

The Gallagher Group has grown and developed into one of South East's most successful privately owned businesses, passionate about their people and relationships with local communities and business. 2024 marks the launch of the Gallagher Academy an initiative to support schools and most importantly the young people that will eventually become successors within the business.

Gallagher strives to help the young people of Kent understand the wide range of opportunities available to them in the construction sector. The academy aims to provide innovative schools sessions, a work experience programme, and an annual careers day to showcase an industry that has so much to offer.



Dr Legumes

Based in Folkestone, Dr Legumes is a Community Interest Company that uses plant-based food as a tool to communicate the ethos of health-conscious food within our local community. We are passionate about blending local and exotic flavours to create a unique plant based dining experience.



Holiday Extras

Using innovative technology and the smartest, fastest and most personal service in travel we bring our customers great value airport hotels, airport parking, airport lounges, airport transfers, car hire, holiday insurance and UK breaks.

With over 40 years' experience, there's nothing that our team of travel experts doesn't know about taking the hassle out of organising a holiday at home or abroad. Whether we're helping remove hassle in person, online or via the Holiday Extras mobile app (which is powered by HEHA!, the super-intelligent Holiday Extras Holiday Assistant) we provide an unrivalled experience to over 8 million travellers a year.



Christina Astin

Christina is well known to many schools in Kent as a teacher, teacher-trainer and workshop leader. She spent over 25 years' experience in the classroom as a science teacher. Now an education consultant and trainer, she offers advice and training in science, leadership and partnerships to schools.

SPACEFUND

Spacefund

Established in the year 2000, Spacefund has evolved into a premier Space and climate -themed STEM Education provider within the UK.

At Spacefund, we ignite young minds and elevate aspirations through our captivating STEM shows and workshops tailored for primary aged children.

Driven by an unwavering passion for space exploration, Jo and Matt Fox have collaborated with prestigious organisations like the UK Space Agency, ESERO-UK, European Space Agency, The Royal Academy of Engineering, The Royal Aeronautical Society, and Girlguiding UK, spearheading numerous educational projects.

Our new, cutting-edge, online, interactive shows such as "Factory of the Future" and "Spaceship Earth" have garnered immense popularity, enchanting thousands of children worldwide with an exhilarating journey into the wonders of STEM.



Sensat

Sensat is a visualisation platform used by civil infrastructure teams to support project planning decision-making. Teams can visualise their plans in a real-world context to present a realistic project view for all stakeholders to identify, discuss and eliminate risks. Being browser-based, it's accessible on any device, anywhere, making crucial information readily available for informed decision-making and sharing. Its user-friendly interface enhances collaboration, ensuring everyone is aligned, reducing errors, and promoting effective presentations. Sensat is for everyone, because the best plans are made together.



Stantec

Stantec has a passion for creating strong and vibrant communities. Through donations, sponsorships, and volunteering, we connect with our communities and help strengthen them in meaningful ways. To do so, we focus on four pillars—arts, education, health and wellness, and environment. Through partnership working, we help encourage primary and secondary students to pursue higher education or training with an emphasis on skill training in sciences and technology.

Learning Programme at a Glance

Key Stage	Curriculum Area (Subject)	Gatsby	Activity	Date(s) in 2024	Provider / Venue
KS1 & KS2	STEM	1,2,4	Spaceship Earth	18th January	Spacefund / Online
KS3	Geography, Science, DT, Computing, Maths	4,5	Sensat Drone School	Jan - March and May	Sensat / In your school & Westenhangar
KS4 & KS5	STEM, Careers	2,3,5	Apprenticeships and the Built Environment	National Apprenticeships Week 5th - 11th February	Gallagher Construction / In your school
KS3	Science (Physics), Careers	4	Renewable Energy Workshops	British Science Week 8th- 17th March	Christina Astin / In your school
KS3	Computing, English, Art and Design	2,5,6	AI Adventures: Journeys into a Creative World	On demand (2 sessions per year)	Holiday Extras / The Wave or Reef Campus Newingreen
KS1 & KS2	STEM	2,4	Factory of the Future	7th March	Spacefund / Online
Upper KS2	Food Technology, PSHE, Science	4,5	Nourished for Life Workshop (and optional assembly)	On demand (Tuesday and Wednesdays)	Dr Legumes / In your school
KS1 - KS5	Citizenship, PSHE, Careers, STEM	4,5,6	Otterpool Park LLP Workshop	As required	Otterpool Park Team / As required
KS2	Science (Biology), Citizenship, Careers	5	Habitats in the Landscape	June - July	Otterpool Park

The 8 Gatsby Benchmarks are:

1. A stable careers programme
2. Learning from careers and labour market information
3. Addressing the needs of each student
4. Linking curriculum learning to careers
5. Encounters with employers and employees
6. Experiences of workplaces
7. Encounters with further and higher education
8. Personal guidance

Community Events Programme

We also run a number of events for the community throughout the year – find out more and sign up to our newsletter for more updates on our website at www.otterpoolpark.org

Bubble Wizard Show
– one of a series of shows and workshops organised by Otterpool Park at Zest Fest 2023





This programme has been
printed on 100% recycled paper



OTTERPOOL PARK
COUNTRYSIDE · CONNECTED · CREATIVE



www.otterpoolpark.org

