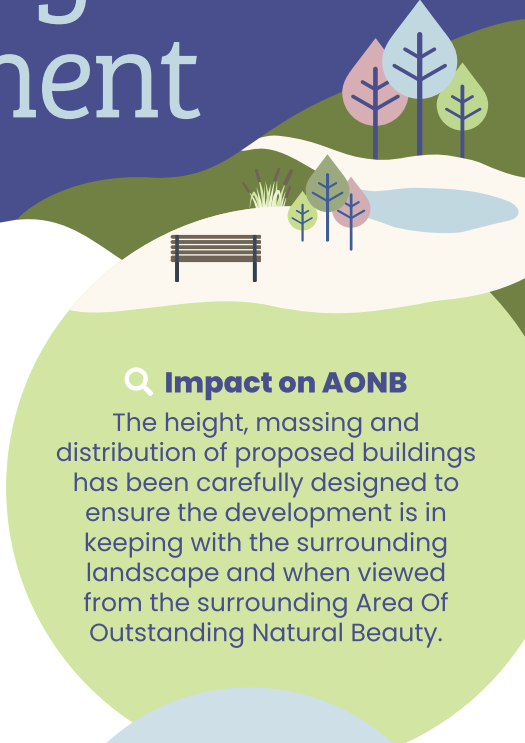


Protecting the environment



As a Garden Town, **minimising the impact on the natural environment and providing a home to wildlife and nature** is as important as answering the area's housing need. Our plans include a number of features that promote better air quality such as tree planting, provision for electric vehicles and public transport.

Q Impact on AONB

The height, massing and distribution of proposed buildings has been carefully designed to ensure the development is in keeping with the surrounding landscape and when viewed from the surrounding Area Of Outstanding Natural Beauty.

Q Green Space

Nearly 50% of the land will be set aside for green spaces, with around 4% of the land retained in farming, protection for wildlife habitats and green buffers to protect existing village character.

Q Air quality protected

Features that promote good air quality, including wide streetscapes and public transport provision.

Q Biodiversity

Demonstrable increase in biodiversity overall. Offsetting and off-site mitigation has been proposed to re-home some species.



OTTERPOOL PARK

COUNTRYSIDE · CONNECTED · CREATIVE

www.otterpoolpark.org

